

## TECHNICAL DATA SHEET

### THYSIS TLLV-10 LOW-LINE TILE VENTILATORS

#### Description:

The Thysis 'Low-Line' ventilators have been designed to be both unobtrusive and practical. The 10k ventilation area is recessed within the profile, and has no sharp edges to trap leaves and any other debris significantly reducing the risk of blocked ventilation and is suitable for pitches of 22.5° and above.

#### Features:

- Moulded in 'High Impact Polystyrene'.
- UV Acrylic paint to match most tile profiles and finishes.
- Suitable for use with pitches of 22.5° and above.
- Recommended 4mm flyscreen protection.
- Comply fully with the requirements of NHBC, BS 5250:2002 and BR Document C.
- Ventilation area 10,000mm<sup>2</sup>.

- **Airflow Resistance:**

- Resistance when used as an extract terminal.
- 10Pa 54m<sup>3</sup>/hr ( 15 litres/sec)
- 42Pa 108m<sup>3</sup>/hr ( 30 Litres/sec)
- 162Pa 216m<sup>3</sup>/hr` ( 60 Litres/sec)

- **Spacing centres required to achieve a ventilation area of:**

- 5000mm<sup>2</sup>/m 2.0m
- 10000mm<sup>2</sup>/m 1.0m

**STR110:** Square to round pipe adapter to suit 110mm flexi-pipe



## TECHNICAL DATA SHEET

### THYSIS SLPS LOW-LINE SLATE VENTILATORS

**SLPS 10-1 Slate Low-Line Ventilator (500 x 250mm) Pin Seal**

**SLPS 10-2 Slate Low-Line Ventilator (600 x 300mm) Pin Seal**

#### **Description:**

The Thysis 'Low-Line' ventilators have been designed to be both unobtrusive and practical. The 10k ventilation area is virtually flat with the sheet, and has no sharp edges to trap leaves and any other debris significantly reducing the risk of blocked ventilation and is suitable for pitches of 22.5° and above.

#### **Features:**

- UV Stable HIPS sheet with a 'Pin-Seal' finish.
- Suitable for use with pitches of 22.5° and above.
- Recommended 4mm flyscreen protection.
- Comply fully with the requirements of NHBC, BS 5250:2002 and BR Document C.
- Ventilation area 10,000mm<sup>2</sup>.
  
- **Airflow Resistance:**
- Resistance when used as an extract terminal.
- 10Pa 54m<sup>3</sup>/hr ( 15 litres/sec)
- 42Pa 108m<sup>3</sup>/hr ( 30 Litres/sec)
- 162Pa 216m<sup>3</sup>/hr` ( 60 Litres/sec)
  
- **Spacing centres required to achieve a ventilation area of:**
- 5mm Continuous Opening – Install at 2.0m centres.
- 10mm Continuous Opening – Install at 1.0m centres.

**STR110:** Square to round pipe adapter to suit 110mm flexi-pipe



## TECHNICAL DATA SHEET

### THYSIS SLVF LOW-LINE SLATE VENTILATORS

**SLVS 10-1 Slate Low-Line Ventilator (500 x 250mm) Riven**  
**SLVS 10-2 Slate Low-Line Ventilator (600 x 300mm) Riven**  
**SLVS 10-3 Slate Low-Line Ventilator (500 x 300mm) Riven**

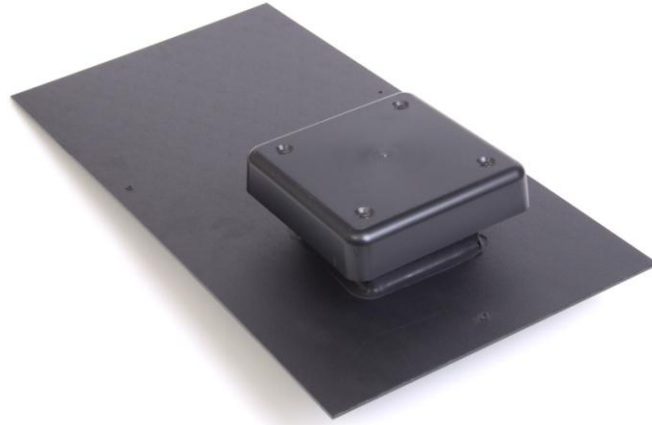
#### Description:

The Thysis 'Low-Line' ventilators have been designed to be both unobtrusive and practical. The 10k ventilation area is virtually flat with the sheet, and has no sharp edges to trap leaves and any other debris significantly reducing the risk of blocked ventilation and is suitable for pitches of 22.5° and above.

#### Features:

- Moulded in 'High Impact Polystyrene'.
- UV Acrylic paint to match most slate colours and finishes.
- Suitable for use with pitches of 22.5° and above.
- Recommended 4mm flyscreen protection.
- Comply fully with the requirements of NHBC, BS 5250:2002 and BR Document C.
- **Airflow Resistance:**
  - Resistance when used as an extract terminal.
  - 10Pa 54m<sup>3</sup>/hr ( 15 litres/sec)
  - 42Pa 108m<sup>3</sup>/hr ( 30 Litres/sec)
  - 162Pa 216m<sup>3</sup>/hr` ( 60 Litres/sec)
- **Spacing centres required to achieve a ventilation area of:**
  - 5mm Continuous Opening – Install at 2.0m centres.
  - 10mm Continuous Opening – Install at 1.0m centres.

**STR110:** Square to round pipe adapter to suit 110mm flexi-pipe



## TECHNICAL DATA SHEET

### THYSIS SCPS RAISED COWL SLATE VENTILATORS

**SCPS 10-1 Slate Raised Cowl Ventilator (500 x 250mm) Pin Seal**

**SCPS 10-2 Slate Raised Cowl Ventilator (600 x 300mm) Pin Seal**

**SCPS 20-1 Slate Raised Cowl Ventilator (600 x 300mm) Pin Seal**

#### **Description:**

The 10k and 20k cowl type range offer unobtrusive designs, have patented 'anti-splash sleeve' devices and flyscreen protection. 10k square to round adapters and flexible pipe for natural ventilation or mechanical extract and 20 square to round for 'passive stack' if required. Ventilation and is suitable for pitches of 15° and above.

#### **Features:**

- UV Stable HIPS sheet with a 'Pin-Seal' finish.
- Suitable for use with pitches of 15° and above.
- Recommended 4mm flyscreen protection.
- Comply fully with the requirements of NHBC, BS 5250:2002 and BR Document C.
- 10k ventilation area 10,000mm<sup>2</sup>.
- 20k ventilation area 20,000mm<sup>2</sup>.
- **Spacing centres required to achieve a ventilation area of:**
- SCPS 10-1 5mm Continuous Opening – Install at 2.0m centres.
- SCPS 10-1 10mm Continuous Opening – Install at 1.0m centres.
- SCPS 20-1 5mm Continuous Opening – Install at 4.0m centres.
- SCPS 20-1 10mm Continuous Opening – Install at 2.0m centres.

**STR110:** Square to round pipe adapter to suit 110mm flexi-pipe