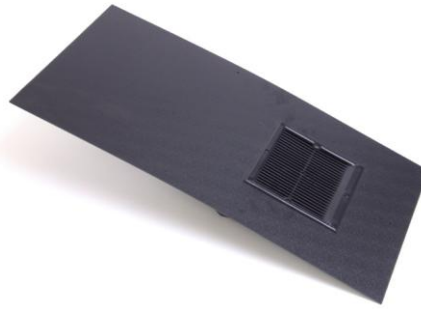




**THYSIS**  
Building Products



## TECHNICAL DATA SHEET

### THYSIS SLPS LOW-LINE SLATE VENTILATORS

The Thysis Universal Low-line ventilators have been designed to be both unobtrusive and for use with most manufacturers' profiles and colours. The 10,000mm<sup>2</sup> ventilation area has no sharp edges to trap leaves and any other debris significantly reducing the risk of blocked ventilation and are suitable for roof pitches of 22.5° degrees and above. The vent incorporates 4mm flyscreen protection.

**Use** Permits entry of air into roof space for cross flow ventilation or for use with mechanical extraction

**Material and colour** UV Stable HIPS sheet with a 'Pin-Seal' finish.

**Product Reference**

SLPS 10-1: Slate Low-Line Ventilator (500 x 250mm) Pin Seal

SLPS 10-2: Slate Low-Line Ventilator (600 x 300mm) Pin Seal

STR110: Square to Round pipe adapter to suit 110mm flexi-pipe

**Authority**

For Roof Space Ventilation:

BS5250: 2011

BS5534:-2003

Building Regulations Approved Document F2: 2010

For Passive Stack Ventilation:

BS5925:1991

Building Regulations Approved Document F1:2010

For Soil Vent Application:

BS EN 12056-2:2000

**Thysis roof ventilation products comply with all British Standard requirements and NHBC regulations.**

## Technical Data

Spacing centres required to achieve a ventilation area of:

5mm Continuous Opening – Install at 2.0m centres

10mm Continuous Opening – Install at 1.0m centres

Airflow Resistance when used as an extract terminal

10Pa	54m <sup>3</sup> /hr	( 15 litres/sec)
42Pa	108m <sup>3</sup> /hr	( 30 Litres/sec)
162Pa	216m <sup>3</sup> /hr	( 60 Litres/sec)